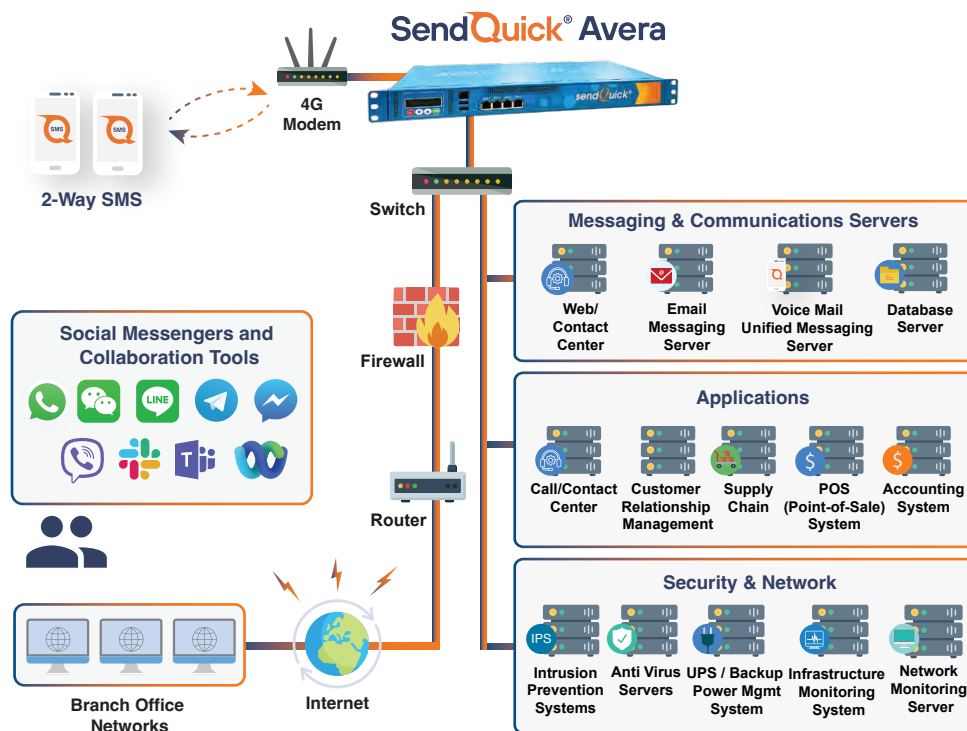


## Active 2-Way Monitoring for Systems Availability

- Single all-in-one appliance for essential system monitoring needs
- Filter Rules with multi-level escalation for SMS Alerts
- Highly cost effective, unlimited number of nodes (model dependant)
- Dependency & suspension monitoring functions



## Simplify and Enhance Your IT Network Management

Are you tired of allocating excessive resources to manage your IT networks? Are you in search of a streamlined and integrated monitoring system? Do you desire a consolidated view of all your notifications and responses related to your IT network?

As companies embrace computerization and strengthen IT security, the complexity of IT networks continues to grow. However, valuable resources should not be squandered on intricate monitoring systems that drain time and energy. What you need is an ideal monitoring system that streamlines, enhances, and simplifies your IT operations and processes.

Introducing SendQuick Avera, the ultimate plug-and-play active 2-way monitoring system designed to cater to your business IT operational needs. With SendQuick Avera, you will receive immediate notifications on critical events in your data center, empowering you to stay on top of your IT environment. Additionally, it offers a consolidated view of all your notifications and responses, bringing clarity and efficiency to your operations.

## KEY FEATURES

- Plug and play appliance for ease of implementation and management
- Monitoring functions include:
  - Ping monitor (server availability)
  - Port check (port availability)
  - URL check (web availability)
  - RAM utilisation (usage level)
  - HDD utilisation (usage level)
  - CPU utilisation (usage level)
  - Windows process (process availability)
  - Windows and Linux services (task availability with restart capability)
- Filter rules for SNMP Traps, Syslog and Email (SMTP) with multi-level escalation and report
- Suspend monitoring functions (for service maintenance)
- Dependency monitoring function to reduce unnecessary SMS texts
- On-demand scanning for a snapshot of systems availability
- SMS to check server status and restart services
- SMS alerts with escalation (5 levels) and reports
- SMS job dispatch with acknowledgement (Helpdesk)
- Address book and shift management for better resource planning (integrated leave management)
- Security control for incoming SMS (control by mobile number)
- Unlimited user accounts
- Summary graphical report (for overall and per system/task)
- Consolidated SMS report view
- Integration with instant messaging applications - Facebook, Slack, WeChat, LINE, Viber, Telegram (Optional)

## BENEFITS

- Operating system independent checking using Ping, Port or URL
- Wide platform compatibility for RAM, HDD and CPU check
- Easy administration and resource management with address book, shift and leave management features
- Highly cost effective due to coverage of unlimited number of nodes (\*model dependent)
- Instant alerts on SMS to shorten response time
- Comprehensive message alerting features providing five levels of escalation with message acknowledgement to reduce system downtime
- Better alert management with suspension and dependency monitoring functions
- Efficient remote monitoring with the ability to use SMS to check server status and trigger shutdown / restart of services

## USAGE SCENARIOS

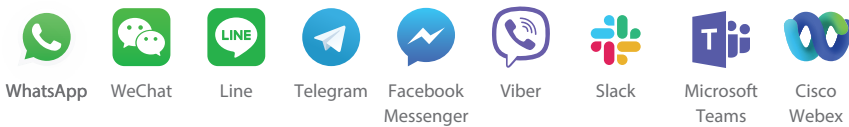
- IT Applications
  - When the network server or application is down,
  - System resources reaches predefined threshold,
  - Windows/Linux services are not responding
- Security Applications
  - When firewall is under attack
  - Network receives threat of an intrusion
  - Systems are subjected to virus infections or other malicious activities
- Physical Environmental Changes
  - Interruption to the power supply (UPS)
  - Environmental conditions indicates a notable change
  - Need to be informed of events
- Communicative Responses
  - Helpdesk can disseminate all required information via SMS dispatch
  - 2-way acknowledgement via SMS & Web

## MONITORING COMPATIBILITY

- Windows
- RedHat
- CENTOS
- Suse LINUX

## INTEGRATION WITH SOCIAL MESSENGERS

SendQuick integrates with existing applications to send messages instantly via SMS, email and social messengers:



## SUPPORTED PLATFORMS



# SendQuick®

Copyright © 2002-2025 SendQuick Pte Ltd. All Rights Reserved. SendQuick product name is a registered trademark of SendQuick Pte Ltd, a company incorporated in the Republic of Singapore. Other product names mentioned herein may be trademarks and/or registered trademarks of their respective companies. Specifications and descriptions subject to change without notice.

# Active 2-Way Monitoring for Systems Availability

SendQuick® Avera is an integrated systems monitoring and alert solution

## HARDWARE SPECIFICATIONS

- Intel® CPU
- Hardened Linux OS
- 8GB RAM
- 1TB HDD
- 1U rack mountable  
[432(W) x 305(D) x 43(H) mm]
- 4 x 10/100/1000BT NIC card
- 4G modem available
- Estimated weight: 5.5kg
- 4 x USB, 1 x RS232, 1 x VGA
- Certification: CE, FCC, UL RoHS

## SOFTWARE SPECIFICATIONS

- SendQuick® Avera software
- Email server
- PostgreSQL database server
- Web user interface

## VM

- 2 Core CPU
- 4GB RAM
- 250GB HDD

### SendQuick Pte Ltd (Singapore Headquarters)

☎ +65 6280 2881

🏠 76 Playfair Road #08-05 Singapore 367996

### SendQuick Sdn Bhd (Malaysia)

☎ +603 7660 5763 , +603 76605764

🏠 PS-2-10, 2nd Floor, Pelangi Sentral,  
Persiaran Surian PJU6A, Pelangi Damansara,  
47820 Petaling Jaya Selangor Darul Ehsan

### SendQuick Pty Ltd (Australia)

✉ ausales@sendquick.com

🌐 [www.sendquick.com](http://www.sendquick.com)

📘 [www.facebook.com/SendQuick](https://www.facebook.com/SendQuick)

🌐 [www.linkedin.com/company/sendquick-pte-ltd](https://www.linkedin.com/company/sendquick-pte-ltd)

✉ [info@sendquick.com](mailto:info@sendquick.com)